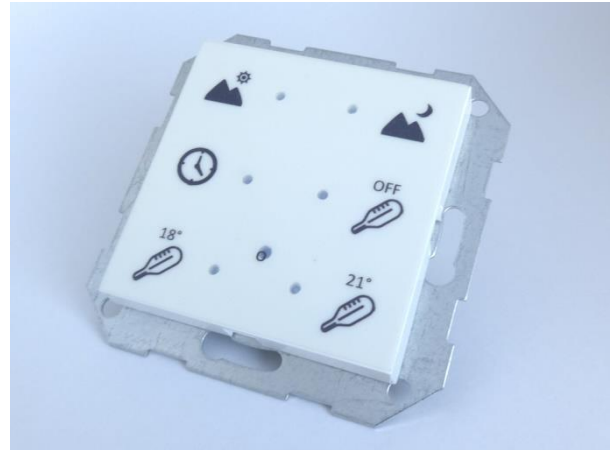


1. Features

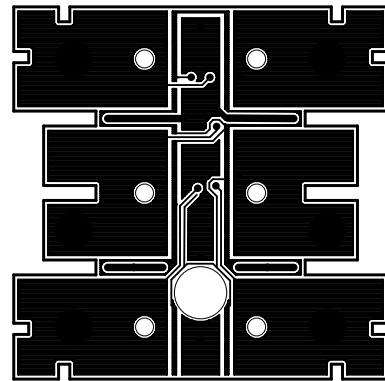
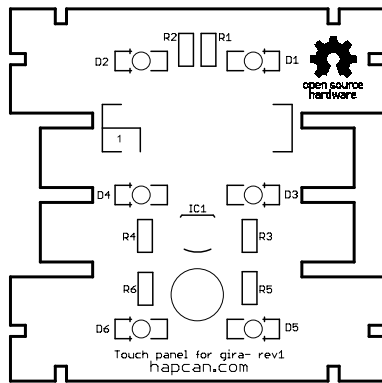
- The touch panel for Gira 55 system
- Uses GIRA blank no 026803
- Designed to work with touch button UNIV 3.1.2.x
- 6 touch sensors
- 6 LEDs
- Temperature sensor type DS18B20+
- For deep back box mounting
- Dimensions with bracket 71x71x16 mm, without bracket 55x55x16 mm
- Schematic and PCB design can be downloaded from hapcan.com site



2. Hardware

2.1. Assembly schematic

- Printed circuit boards *PCB Touch panel for gira-rev1*
- PCBs dimensions: 50mm x 50mm

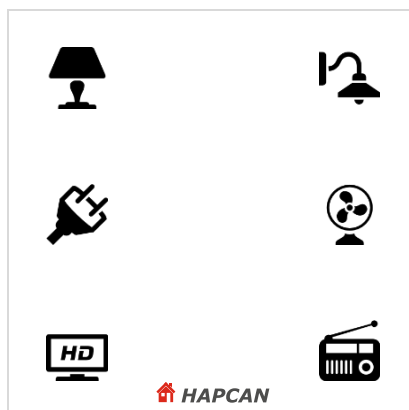


2.2. Components

Designator	Type	Footprint	Description
R1, R2, R3, R4, R5, R6	1k	0805	Resistor
D1, D2, D3, D4, D5, D6	Reverse mount LED	1206	LED
CON1	16 pin for smt	Raster 2,54mm	Smt connector
CON2	AWP-16	Raster 1,27mm	IDC connector
TEMP	DS18B20+	TO-92	Temperature sensor

2.3. Labels

Editable labels version is available on hapcan.com site. Icons thanks to <http://icons8.com>.



2.4. Schematic

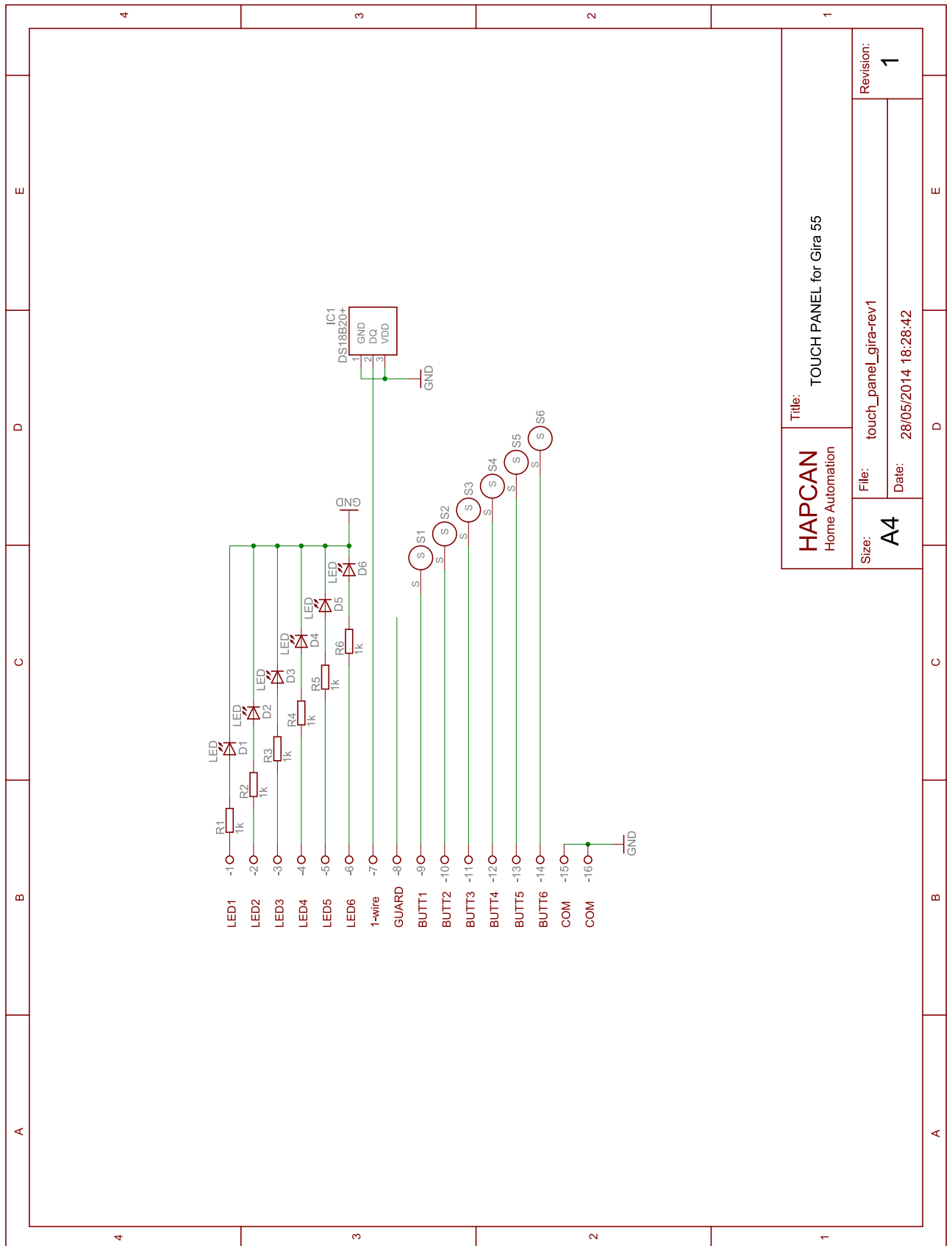


Figure 2. Schematic of touch panel for gira 55 system

3. License



HAPCAN Home Automation Project hardware, Copyright (C) 2014 hapcan.com

This device is free hardware: you can redistribute it and/or modify it under the terms of the GNU General Public License as published by the Free Software Foundation, either version 3 of the License, or (at your option) any later version.

This hardware is distributed in the hope that it will be useful, but WITHOUT ANY WARRANTY; without even the implied warranty of MERCHANTABILITY or FITNESS FOR A PARTICULAR PURPOSE. See the GNU General Public License for more details.

You should have received a copy of the GNU General Public License along with this documentation. If not, see <http://www.gnu.org/licenses/gpl-3.0.html>.

4. Document version

File	Description	Date
touch_panel_gira55_a.pdf	Original version	June 2014